

Twenty-First Annual

# Minnesota Health Services Research Conference

CONTINUING EDUCATION AND CONFERENCE CENTER  
ST. PAUL CAMPUS, UNIVERSITY OF MINNESOTA

**Tuesday, March 7, 2017**

## Conference Information & Registration

### Sponsoring Organizations:

Allina Health

HealthPartners Institute for  
Education & Research

VA—Center for Chronic Disease  
Outcomes Research

Fairview Health Services

Medica Research Institute

Minnesota Department of Health

Minnesota Department of Human  
Services

National Marrow Donor Program

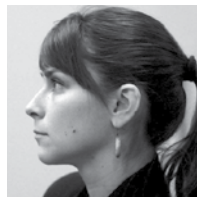
PreferredOne

Mayo Clinic

Flying Eagle Transportation

Stratis Health

UMN SPH HPM Center for Care  
Organization R&D (CCORD)



# Goals

## Keynote Speaker

**Dr. Arlene Bierman**

*Director, Center for Evidence and Practice Improvement, AHRQ*

KEYNOTE ADDRESS: 8:15 a.m.



Arlene S. Bierman, M.D., M.S., is director of AHRQ's Center for Evidence and Practice Improvement which consists of five divisions: the Evidence-Based Practice Center Program; the U.S. Preventive Services Task Force Program; the Division of Decision Science and Patient Engagement; the Division of Health Information Technology and the Division of Practice Improvement and the National Center for Excellence in Primary Care Research. Dr. Bierman is a general internist, geriatrician and health services researcher whose work has focused on improving access, quality and outcomes of health care for older adults with chronic illness in disadvantaged populations. Dr. Bierman has also developed strategies for using performance measurement as a tool for knowledge translation, as well as conducted research to increase policymakers' uptake of evidence. As tenured professor she held appointments Health Policy, Evaluation, and Management; Public Health; and Medicine; and Nursing at the University of Toronto, where she was the inaugural holder of the Ontario Women's Health Council Chair in Women's Health and a senior scientist in the Li Ka Shing Knowledge Institute at St. Michael's Hospital. She was also principal investigator for the Project for an Ontario Women's Health Evidence-Based Report Card (POWER) study, which provided actionable data to help policymakers and health care providers improve health and reduce health inequities in Ontario. Dr. Bierman has served on many advisory committees including the Geriatric Measurement Advisory Panel of the National Committee for Quality Assurance, the boards of Health Quality Ontario, and the National Center of Excellence National Initiative for Care of the Elderly (NICE). She received her MD degree from the University of North Carolina School of Medicine in Chapel Hill where she was a Morehead Fellow. She completed fellowships in Outcomes Research at Dartmouth Medical School, and Community and Preventive Medicine at the Mount Sinai School of Medicine and also served as an Atlantic Philanthropies Health and Aging Policy Fellow/American Political Science Foundation Congressional Fellow.

Allina Health, HealthPartners Institute for Education & Research, VA—Center for Chronic Disease Outcomes Research, Fairview Health Services, Medica Research Institute, Minnesota Department of Health, Minnesota Department of Human Services, National Marrow Donor Program, PreferredOne, Mayo Clinic, Flying Eagle Transportation, Stratis Health, UMN SPH HPM Center for Care Organization R&D (CCORD) are pleased to convene the **TWENTY-FIRST ANNUAL MINNESOTA HEALTH SERVICES RESEARCH CONFERENCE**.



The **purpose** of this conference is to bring together Minnesota's health services research community for a day of scholarly presentations and discussions. The **goal** is to establish a dialog among all those doing health services research in Minnesota.

The sponsors encourage health services researchers, health care providers, public health officials, health care administrators, and any others interested in health care policy and research to attend.

The conference would like to thank the sponsors for all of their hard work and financial support in making this event a success.

# Keynote

Twenty-First Annual  
Minnesota Health Services Research Conference

March 7, 2017

7:15–8:00 AM  
*Lobby* Registration, Continental Breakfast,  
Exhibits by Sponsoring Organizations

8:00–8:15 AM  
*Room 135AC* Welcome Notes and Introduction of Keynote Speaker

8:15–9:15 AM  
*Room 135AC* Keynote Address: Dr. Arlene Bierman, Director, Center for Evidence and  
Practice Improvement, AHRQ

# Schedule

## CONCURRENT SESSION ONE

9:45–11:00 AM  
*Room 135AC*  
**SYMPOSIUM 1A**  
CONVENER: Stefan Gildemeister

*Room 135BD*  
**PAPER SESSION 1B**  
Role of Networks and Context  
CONVENER: Angela Fertig

*Room 155*  
**PAPER SESSION 1C**  
Health and Services for Children and  
Adolescents  
CONVENER: Kyle Dorsey

*Room 156*  
**PAPER SESSION 1D**  
Drivers of Patterns in Service use  
CONVENER: Nathan Shippee

## CONCURRENT SESSION TWO

11:15 AM–12:30 PM  
*Room 135AC*  
**PAPER SESSION 2A**  
Health Insurance and Access in MN  
CONVENER: Alisha Simon

*Room 135BD*  
**PAPER SESSION 2B**  
Performance Measurement  
Methods  
CONVENER: Douglas Wholey

*Room 155*  
**PAPER SESSION 2C**  
Practice-Based Research  
CONVENER: Nathan Shippee

*Room 156*  
**PAPER SESSION 2D**  
Student Paper Competition  
CONVENER: Peter Huckfeldt

12:30–1:30 PM  
**LUNCH**  
Announcement of Student Paper Competition Award Winners

## CONCURRENT SESSION THREE

1:45–3:00 PM  
*Room 135AC*  
**PAPER SESSION 3A**  
Research on the Affordable Care Act  
CONVENER: Alisha Simon

*Room 135BD*  
**PAPER SESSION 3B**  
Post-acute, long-term, and late-  
life care  
CONVENER: Nathan Shippee

*Room 155*  
**PAPER SESSION 3C**  
Patient-centered Care and Research  
CONVENER: Douglas Wholey

*Room 156*  
**PAPER SESSION 3D**  
Disparities among Old Adults  
CONVENER: Tetyana Shippee

## CONCURRENT SESSION FOUR

3:15–4:30 PM  
*Room 135AC*  
**PAPER SESSION 4A**  
Role of Employers and Employer-  
Sponsored Insurance  
CONVENER: Kristina Bloomquist

*Room 135BD*  
**SYMPOSIUM 4B**  
Geographic Variation in Services  
CONVENER: Nathan Shippee

*Room 155*  
**PAPER SESSION 4C**  
Healthy Eating  
CONVENER: Angela Fertig

*Room 156*  
**PAPER SESSION 4D**  
Substance Use  
CONVENER: Barbara Frank

Room 135AC

**SYMPOSIUM 1 A****Inefficiencies in the Health Care System: Minnesota Data**

CONVENER: Stefan Gildemeister

PRESENTERS: Elizabeth Egan, Astrid Knott, Christopher Frenier, Bithia Anderson

Room 135BD

**PAPER SESSION 1B****Role of Networks and Context**

- The Impact of Nurse Practitioner Scope of Practice Legislation on Health and Access to Health Care—*Heather Dahlen*
- Strong Interorganizational Networks: the Performance of Medicare Shared Savings Program Accountable Care Organizations—*Dennie Kim*
- The Long Road Ahead: Network Adequacy Standards in Health Insurance Marketplace Provider Networks—*Coleman Drake*

Room 155

**PAPER SESSION 1C****Health and Services for Children and Adolescents**

- Estimating the Incidence of Intergenerational Child Maltreatment in Minnesota, 2000–2014—*Dylan Galos*
- Is medical home access associated with improving school absenteeism among children with asthma?—*Sirikan Rojanasart, Angeline Carlson*
- Disparities in health and access to care in children who reside in single-parent households—*Kendal Orgera*

Room 156

**PAPER SESSION 1D****Drivers of Patterns in Service use**

- Drivers of Timely Referral of Patients with Acute Myeloid Leukemia for Hematopoietic Cell Transplantation Consultation—*Ellen Denzen et al.*
- Understanding influenza and influenza vaccination as health priorities among black and Latino older adults using Q methodology—*Tongtan Chantarat, Ebele O. Benjamin*
- Do labor market conditions affect the length of stay for chronic respiratory failure hospitalizations?—*Eric Christensen*

Room 135AC

**PAPER SESSION 2A****Health Insurance and Access in MN**

- Simulation of Changes in Health Insurance Age Rating—*Nathan Hierlmaier et al.*
- Understanding the adequacy of health insurance coverage and the health of Minnesotans—*Sarah Hagge et al.*
- Estimates of Health Care Access, Utilization, and Cost in Minnesota—*Joanna Turner*

Room 135BD

**PAPER SESSION 2B****Performance Measurement Methods**

CONVENER: Douglas Wholey

- Assessing Risk Adjusting Clinic Quality Measures for Socio-Demographic Factors—*Douglas Wholey et al.*
- Imputation of Race: Known Unknowns in Health Care Data—*Jennifer Poole, David Kelly*
- Does the presence of a children's hospital in a market reduce the market's in-hospital mortality rate?—*Eric Christensen, Michael Finch*

Room 155

**PAPER SESSION 2C****Practice-based Research**

- Perspectives from Patients and Health Care Home Delivery Teams: Care Quality for Complex Chronically-Ill Patients—*Sarah Manser et al.*
- How a Complex Healthcare System Developed, Deployed, and Sustained an Evidence-Based Care Delivery Infrastructure—*Anna Briggs Kleckner*
- Creating a Sustainable Community Care Team (CCT)—*Kasey Boehmer et al.*

Room 156

**PAPER SESSION 2D****Student Paper Competition**

- Impacts of Hospital Obstetric Unit Closures on Access, Procedure, and Outcomes of Obstetric Care in 2002 and 2013—*Peiyin Hung*
- Narrow Provider Networks and Willingness to Pay for Continuity of Care and Network Breadth—*Lucas Higuera*
- Utilization of Risk Stratification and Viral Testing in the Care of Febrile Infants without an Obvious Source—*Sara Osborne*

Room 135AC

**PAPER SESSION 3A****Research on the Affordable Care Act**

- Modeling Plan Change and Premium Increases in the Individual Health Insurance Market in Minnesota under the Affordable Care Act—*Alisba Simon*
- Insurance-based discrimination and its association with access to care in Minnesota before and after the ACA—*Kathleen Call et al.*
- Aging Out of the Affordable Care Act's Dependent Coverage Provision Eligibility and Pap Smear Utilization among Young Adult Women—*Breanna Arndt*

Room 135BD

**PAPER SESSION 3B****Post-acute, long-term, and late-life care**

- Impact of a Post-Acute Care Network on Medicare Fee-for-Service 30-day Hospital Readmissions—*Erik Zabel, Janelle Shearer*
- LifeCourse—the effectiveness of a late life intervention on quality of life, healthcare utilization and total cost of care—*Heather Britt, Nathan Shippee*
- Medicaid Accountable Care Organizations (ACOs), Long-Term Services and Supports (LTSS), and Post-Acute Care (PAC): Lessons from Four States—*Jenna Libersky, Carol Irvin*

Room 155

**PAPER SESSION 3C****Patient-centered Care and Research**

- Validation of the Patient Experience with Treatment and Self-Management, a patient-reported measure of treatment burden, in people with diabetes—*Elizabeth Rogers et al.*
- Developing patient-centered health education materials: the case of safe fish consumption—*Jennifer Renner et al.*
- Learning from a patient-centered outcomes research (PCOR) approach to developing a dementia health services research focus: a work in progress—*Patricia Carlson*

Room 156

**PAPER SESSION 3D****Disparities among Older Adults**

- A Descriptive Study of Characteristics Related to Food Insecurity among American Seniors in Recent Years—*Xuyang Tang et al.*
- Racial Differences in Self-Rated Health for Older Adults Receiving Public-Funded Long-Term Care Services and Supports in Minnesota—*Tetyana Shippee et al.*
- Racial and Ethnic Difference in Dental Care for Older Adults Receiving Public-Funded Long-Term Care Services and Supports in Minnesota—*Tetyana Shippee, Yinfei Duan et al.*

Room 135AC

**PAPER SESSION 4A****Role of Employers and Employer-sponsored Insurance**

- State Risk Pools: Do ESI prevalence and public program eligibility levels matter?—*Lynn Blewett et al.*
- Evaluating the Impact of a Digitally-Based Diabetes Prevention Program in an Employer Population—*Jean Abraham et al.*
- Offering Paid Sick Leave to Employees in Minnesota Improves their Health—*Giovanni Alarcon*

Room 135BD

**PAPER SESSION 4B****Geographic Variation in Services**

- Geographic Variation in Adolescent Mental Health Screening Rates in Minnesota—*Rachel Caboon*
- Factors Associated with the Loss of Hospital Obstetric Care in the US 2003–2013—*Peiyin Hung*

Room 155

**PAPER SESSION 4C****Healthy Eating**

- A pilot study of the effect of a discount produce card and educational programming on health eating in low-income households—*Angela Fertig et al.*
- Does Nutrition Education Enhance the Potential Effect of Financial Incentives on Fresh Produce Purchases? A study about healthy eating nudges for low-income individuals—*Xuyang Tang et al.*

Room 156

**PAPER SESSION 4D****Substance Use**

- Exploring the Rise of Opioid Abuse and Misuse in Minnesota—*Colin Planalp*
- Age of cannabis use onset and its association with age of (FEP) First episode of Psychosis. A retrospective observational review of Schizophrenia spectrum disorder cases—*Trishna Sharma*

## Twenty-First Annual Minnesota Health Services Research Conference

**Tuesday, March 7, 2017**

**Continuing Education and Conference Center  
1890 Buford Avenue  
St. Paul, MN 55108**

For additional information, call  
Sharon Cain at 612-624-7990 or  
email: [cains@umn.edu](mailto:cains@umn.edu)

### Directions to the Continuing Education and Conference Center

FROM I-694 take 35W south to the Cleveland Avenue exit (Note: exit to the left). Follow Cleveland Avenue to Larpenteur Avenue. Go east (left) on Larpenteur to Gortner, turn south (right) on Gortner and go to Buford Avenue. Turn east (left) on Buford Avenue to the parking area.

FROM I-35W take the Highway 36 exit and turn south on Cleveland Avenue to Larpenteur Avenue. Go east (left) on Larpenteur to Gortner, turn south (right) on Gortner and go to Buford Avenue. Turn east (left) on Buford Avenue to the parking area.

FROM DOWNTOWN ST. PAUL go west on I-94 to Snelling Ave. Go north on Snelling Ave. to Larpenteur Avenue. Go west (left) on Larpenteur to Gortner, turn south (left) on Gortner and go to Buford Avenue. Turn east (left) on Buford Avenue to the parking area.

FROM DOWNTOWN MINNEAPOLIS go east on I-94 to MN-280, exit number 236. (Note: exit to the left). Merge onto MN-280 north. Exit at Larpenteur Ave. Take Larpenteur east (right) to Gortner (3rd traffic light). Turn south (right) on Gortner and go to Buford Avenue. Turn east (left) on Buford Avenue to the parking area.

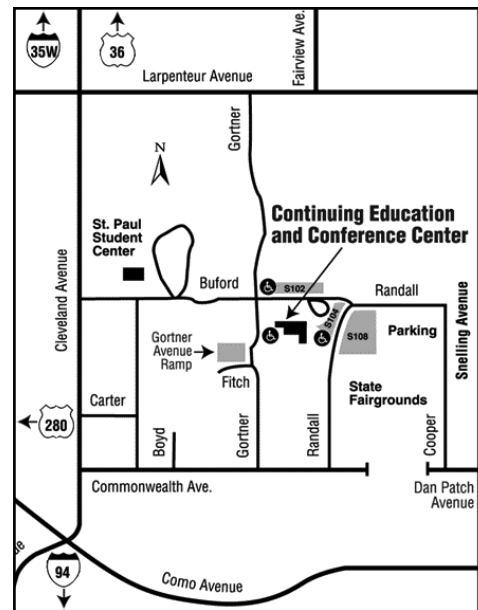
### PARKING

Free parking available in Lot S104 beginning at 7:00am. Please tell the attendant you are with the "HSR Conference."

### EDUCATIONAL OBJECTIVES

Following this conference, participants will be able to:

- Discuss the issues presented in each of the concurrent sessions attended.
- Demonstrate increased awareness about state and national health policy issues.
- Understand and discuss current health services research issues.
- View their part of the health care environment with the added perspective of other disciplines represented at the conference.
- Contact other health services researchers with similar research interests.



## Registration

**REGISTRATION FEE:** The registration fee for the conference is \$70. No partial day or group rates are available. **Presenters, discussants, conveners, and sponsors must register for the conference and pay the standard registration fee.** The fee for students registered for at least 6 credits (and not employed by a sponsoring organization) is \$35. Students are eligible to apply for a scholarship for a reduced conference fee.

**STUDENT SCHOLARSHIPS:** Ten undergraduate/graduate student scholarships are available on a first come, first served basis at a registration rate of \$20. These scholarships are offered to cover the registration fee for students who are registered for at least six credits and have an interest in health services research. To apply, please write a brief paragraph describing your interest in health services research and/or the conference theme. Your submission will be evaluated and you will be notified of the outcome within several days of our receipt of the application. Forward your statement by e-mail to Sharon Cain at [cains@umn.edu](mailto:cains@umn.edu), and complete the on-line registration form (see links below), noting your scholarship request.

To register for the conference, please follow the URL link listed below.

**Payment by credit card option:** If your registration fee is being paid by credit card, please fill out the registration and payment information at: <https://learning.umn.edu/portal/events/reg/participantTypeSelection.do?method=load&entityId=7363409>

**Payment by check option:** If your registration fee is being paid by personal or business check, please contact Sharon Cain (612-624-7990).

To correspond by mail, please use the following address:

**Twenty-First Annual Minnesota Health Services Research Conference**  
Division of Health Policy and Management  
University of Minnesota School of Public Health, c/o Sharon Cain  
420 Delaware Street SE, MMC 729  
Minneapolis, MN 55455-0374

The registration fee for the Minnesota Health Services Research Conference covers the cost of a continental breakfast, break refreshments, and lunch. A vegetarian meal will be available. The sponsoring organizations cover all other conference costs.

Please contact us if you have special mobility needs so we can arrange for these prior to the conference for you.

For additional information, contact Sharon Cain at 612-624-7990 or email: [cains@umn.edu](mailto:cains@umn.edu)  
This registration brochure can be downloaded at <http://www.sphcenters.umn.edu/hsrconf/>  
The web site for conference registration and payment is at  
<https://learning.umn.edu/portal/events/reg/participantTypeSelection.do?method=load&entityId=7363409>

*The University of Minnesota is an equal opportunity educator and employer.*